

**NOTE: DO NOT DISCARD the Parts List from the Instruction Bulletin. Place the Parts List in the appropriate place in the machine manual for future reference. Retaining the Parts List will make it easier to reorder individual parts and will save the cost of ordering an entire kit.**

*NOTE: Numbers in parenthesis ( ) are reference numbers for parts listed in Bill of Materials.*

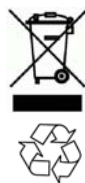
Installation instructions for **kit number 9015041**

## SYNOPSIS:

This kit contains the parts needed to replace standard pod assembly on M17 sweeper scrubbers. Please follow step-by-step instructions.

## SPECIAL TOOLS / CONSIDERATIONS: NONE

(Estimated time to complete: 50 minutes)



### PROTECT THE ENVIRONMENT

Please dispose of packaging materials, used machine components such as batteries and fluids in an environmentally safe way according to local waste disposal regulations.

Always remember to recycle.

## PREPARATION:

1. If steering pod assembly on machine is operable, connect service computer to the pod, turn the key to the ON position, start the Capture application, and note machine settings. The new steering pod assembly (1) must be configured to the same settings.

*NOTE: If steering pod assembly is completely inoperable, the machine configuration settings will need to be set to the optional equipment on the machine and / or set to the standard default settings.*

2. If steering pod assembly on machine is operable, record the hours from the hour meter.

**FOR SAFETY: Before leaving or servicing machine, stop on level surface, turn off machine, and remove key.**

3. Disconnect the battery cable from the machine.



**WARNING: Always disconnect battery cables from machine before working on electrical components.**

4. Remove the access panel from the machine. Set the access panel and all hardware aside.

## INSTALLATION:

1. Disconnect the main wire harness from the steering pod assembly. (Fig. 1)

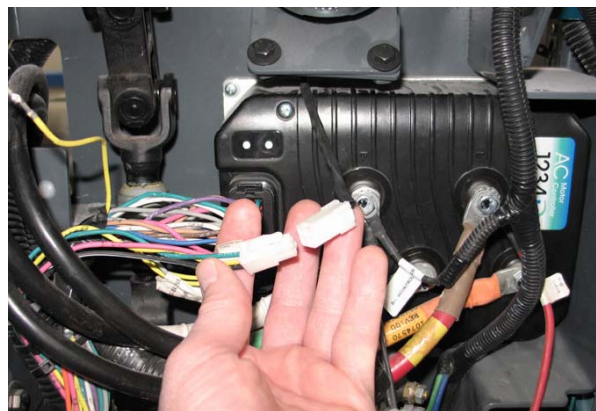
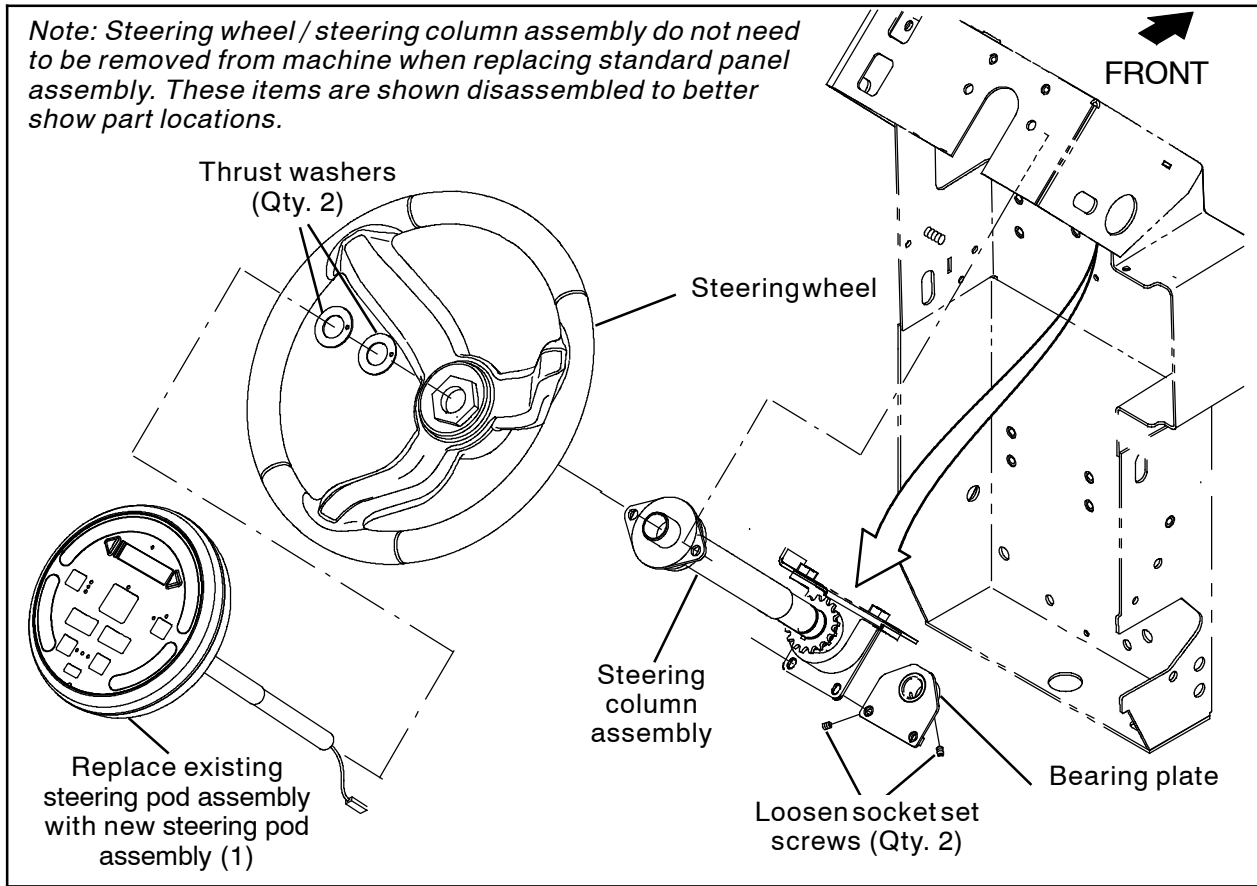


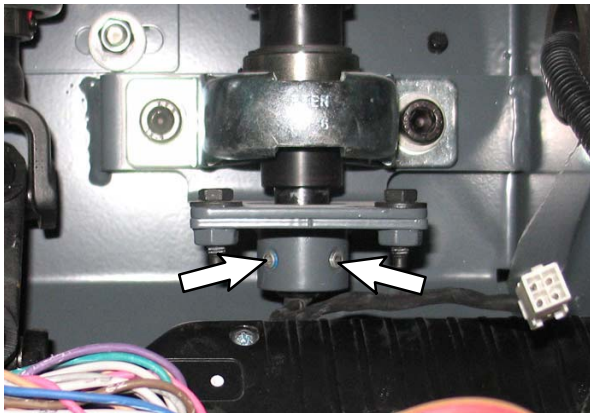
FIG. 1

*Note: Steering wheel / steering column assembly do not need to be removed from machine when replacing standard panel assembly. These items are shown disassembled to better show part locations.*



**FIG. 2**

2. Loosen the socket set screws in the bearing plate securing the steering pod assembly to the steering column assembly. (Fig. 2 / Fig. 3)



**FIG. 3**

3. Pull the steering pod assembly out from the steering wheel / steering column assembly. (Fig. 2)

4. Remove the thrust washers from the removed steering pod assembly and slide the thrust washers onto the new steering pod assembly (1). Discard the removed steering pod assembly. (Fig. 2)

5. Insert the new steering pod assembly (1) into the steering assembly. (Fig. 2)

6. Orient the steering pod assembly (1) so the display is positioned correctly in the steering wheel and tighten the socket screws to secure the steering pod assembly into the bearing plate. (Fig. 2 / Fig. 3)

7. Connect the steering pod assembly (1) to the main wire harness. (Fig. 1)

8. Reinstall the access panel onto the machine

9. Reconnect the battery cable to the machine.

## ACCESSING TENNANT SERVICE APPLICATION SOFTWARE:

Tennant Service Application Software is required to program the new control console control board. The software can be accessed or installed.

**For Tennant service personnel equipped with ServiceLink computers,** the software is already installed on the service computer.

Proceed to *PROGRAM THE CONTROL BOARD*.

**For other Service Groups,** download the Service Application Software from the “My Tennant” website. Frequently check site for latest version of the Service Application Software.

1. Go to [www.tennantco.com](http://www.tennantco.com) and click on the “My Tennant Customer Sign In” tab in the upper left corner. (Fig. 4)



FIG. 4

2. Log on to the “My Tennant” website or register as a new user. (Fig. 5)

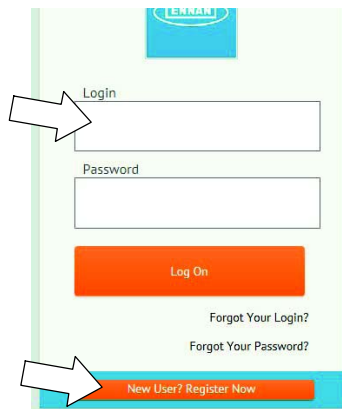


FIG. 5

3. Once logged on to the “My Tennant” website, click on the “Service Application Software” link in the “Product Support & Solution” section. (Fig. 6)



FIG. 6

4. Within the Service Application Software page, click on the “Service Diagnostics...” link to download the application installer. (Fig. 7)

*NOTE: If the version is the same as current install, there is no need to update..*

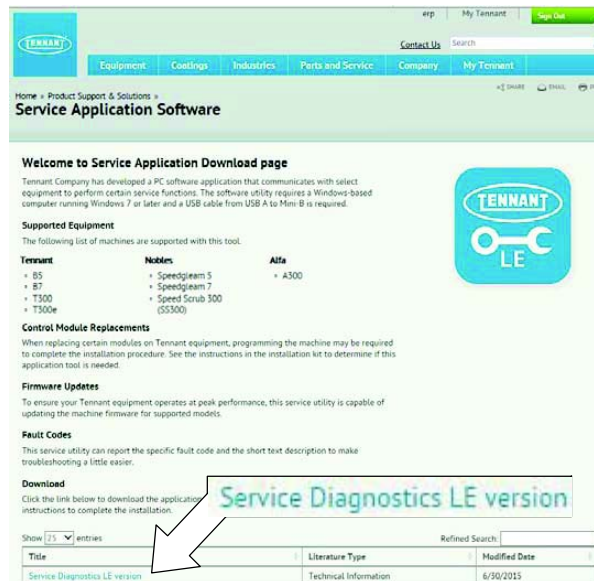
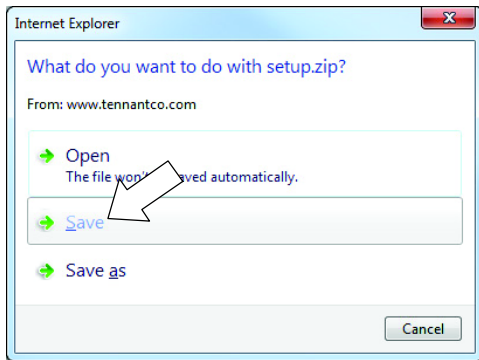


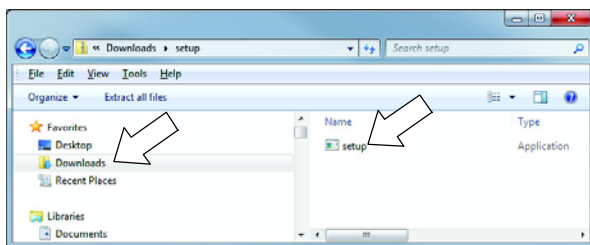
FIG. 7

5. Click the Save button.(Fig. 8)



**FIG. 8**

6. Open the Downloads folder and click on the "Setup" file to install the application software onto the computer. (Fig. 9)



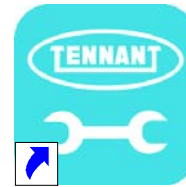
**FIG. 9**

7. After the application software is installed on the computer, Proceed to *PROGRAM THE CONTROL BOARD*.

## PROGRAM THE CONTROL BOARD:

If any problems are encountered during the programming process, contact the Technical Service Department for support.

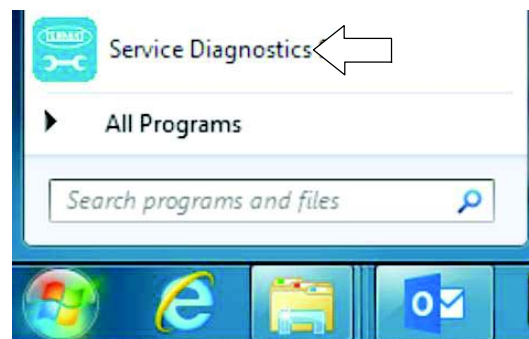
1. Access the software through either the desktop icon or the Start Menu. The software application is titled "**Service Diagnostics**". ( Fig. 10 / Fig. 11 / Fig. 12)



Service Diagnostics

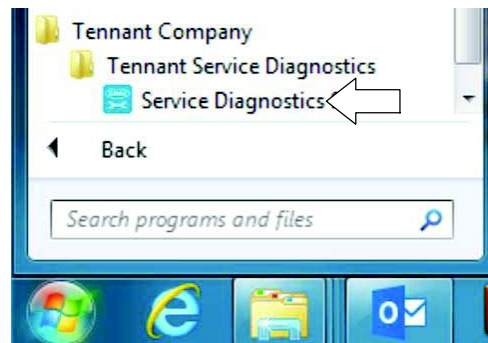
**FIG. 10**

### From Start menu



**FIG. 11**

### Start menu > All Programs > Tennant Company > Tennant Service Diagnostics



**FIG. 12**

2. Start the Service Software Application program. The following screen will appear. (Fig. 13)

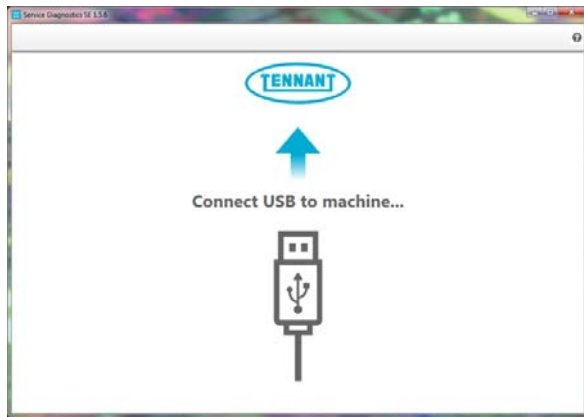


FIG. 13

3. Connect the USB cable to the computer and the USB port on machine. Turn the key switch to the ON position.
4. The application software will connect to the machine (Fig. 14).

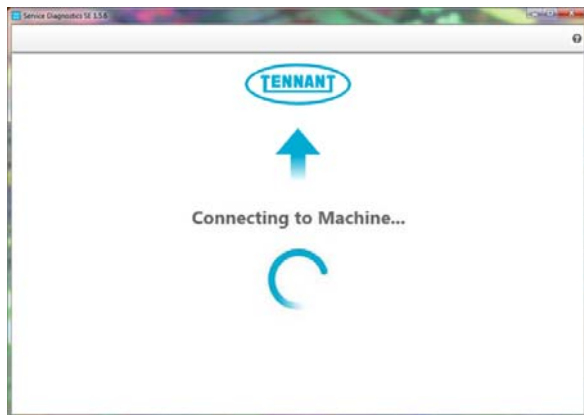


FIG. 14

If the application remains on the “Connecting to Machine...” screen for an extended period, cycle key or close and restart the application software. If it still fails to connect, restart the computer.

5. The following screen appears when the application software is connected to machine (Fig. 15). Enter the machine serial number from the label on machine (ex. M17-12345678). Select the appropriate model from the drop-down menu. Click the arrow button to advance to next screen.

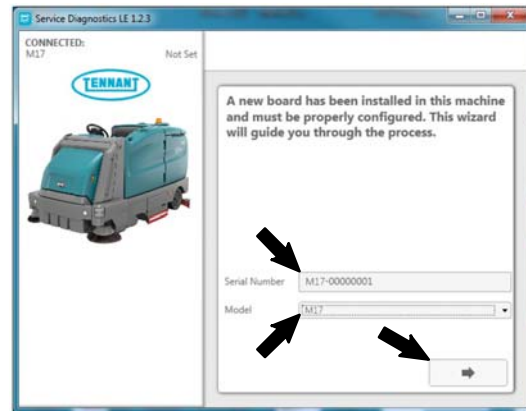


FIG. 15

6. Carefully select the correct installed options on the machine (Fig. 16). This may require visually inspecting the machine to confirm all installed options. Click the arrow button to advance to next screen.

*NOTE: If the machine is configured with an option it does not have, a fault code may appear during machine start up.*

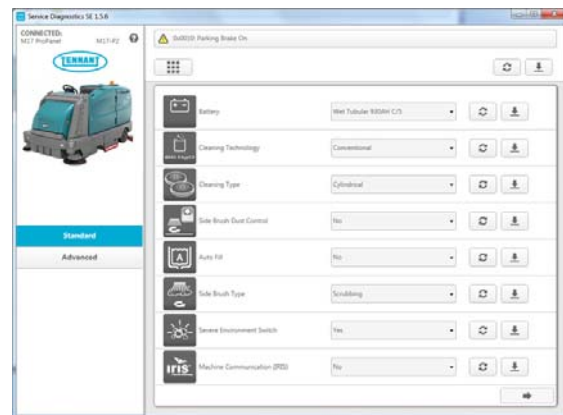
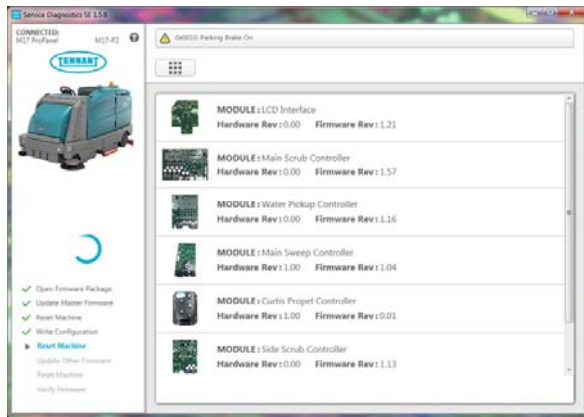


FIG. 16

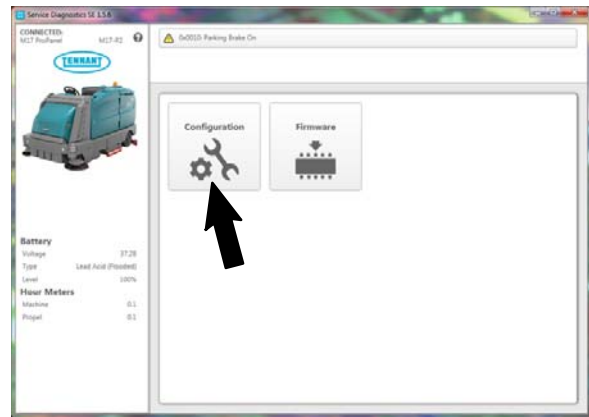


- The application will begin configuring the new control board. Allow the configuration process to be completed. (Fig. 17)



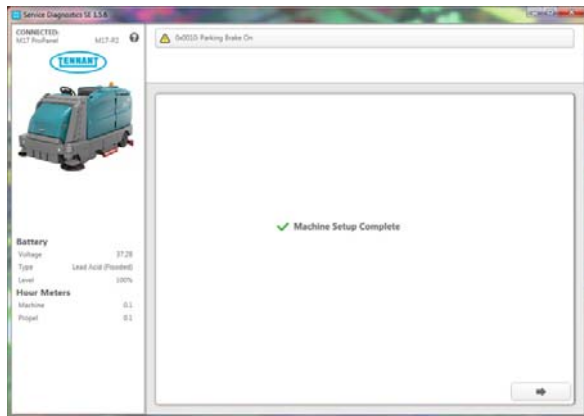
**FIG. 17**

- Check the machine configuration selections for incorrect installed options. Click the Configuration button. (Fig. 19)



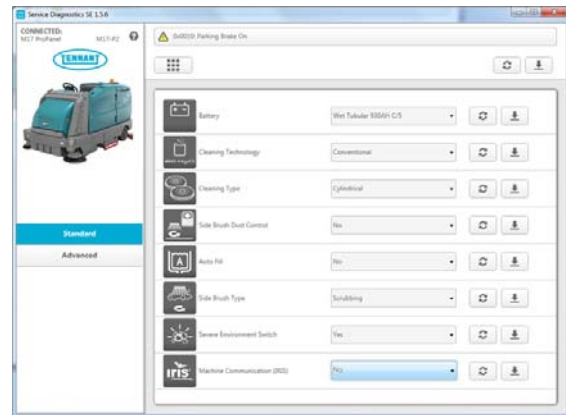
**FIG. 19**

- The Machine Setup Complete screen appears after configuration is complete. (Fig. 18)



**FIG. 18**

- Correct the installed options. (Fig. 20)

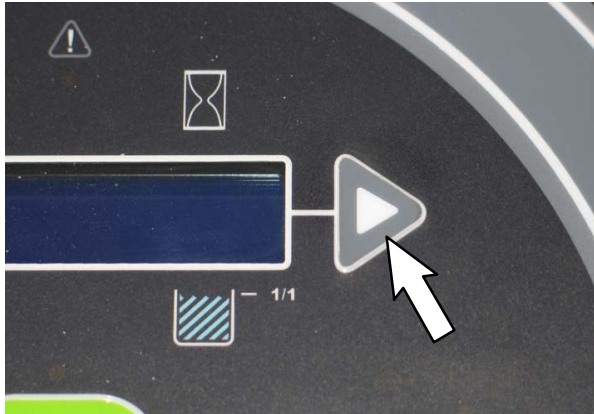


**FIG. 20**

- Disconnect the USB cable from the machine and turn key off. The machine is now ready for operation.
- Test machine to ensure all installed options are functioning and no fault codes appear. If a fault code appears, proceed to next step.
- Reconnect the USB cable to the computer and the machine. The Main Menu will appear on the computer screen.

- Click the down arrow button located at the top right of the window to program the machine. A green check appears next to the down arrow button when programmed. (Fig. 20)
- Cycle key to apply the corrected configuration setting.
- Disconnect the USB cable from the machine.

17. Press and hold the right arrow key and turn the key switch to the ON position. (Fig. 21)



**FIG. 21**

18. The steering pod assembly (1) should boot to the Service Modes menu. Press the right arrow button / left arrow button to scroll to the CONFIG MODE menu from the Service Modes menu. (Fig. 22)



**FIG. 22**

19. Press the main scrub brush pressure button to enter the CONFIG MODE. (Fig. 23)



**FIG. 23**

20. Press either the right arrow button or the left arrow button to scroll to C16: PROPEL H. M. Press the main scrub brush pressure button to enter the C18: Propel H.M. Log in screen. (Fig. 24)

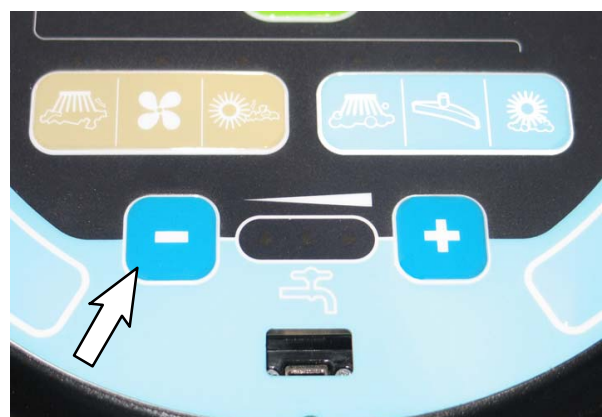


**FIG. 24**

21. Log in to C18: Propel H.M. (hour meter reset password is 0000): Press the minus (-) button to enter 0 (zero) at first asterisk. Press the right arrow button to move to next asterisk and again press the minus (-) button to enter 0 (zero). Repeat for the remaining asterisks. Press the main scrub brush pressure button when finished. (Fig. 25 / Fig. 26)



**FIG. 25**

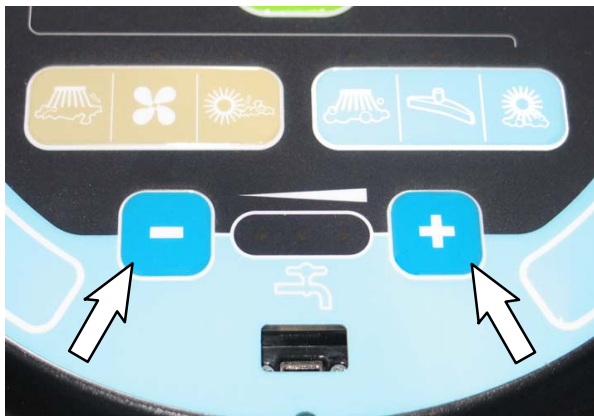


**FIG. 26**

22. Reset the hour meter at the C18: Chg Prpl Hr screen: Use the minus (-) button and plus (+) button to set / reset numbers and the right arrow button to move to the next number. If necessary, use left arrow to move back to previous number. (Fig. 27 / Fig. 28)



**FIG. 27**



**FIG. 28**

*NOTE: If hour meter was inaccessible due to pod being inoperable call Field Service Support for the hour meter time from the last time the machine was serviced.*

23. Press the main scrub brush pressure button when finished entering the time for the hour meter.

24. Press either the right arrow button or left arrow button to scroll to Exit Config Mode. Yes should appear under the top line of text. Press the main scrub brush pressure button. (Fig. 29)



**FIG. 29**

25. The Exit Config Mode menu should open. <Yes > should appear under the top line of text. Press the main scrub brush pressure button again to exit the Configuration Mode. (Fig. 30)



**FIG. 30**

26. Turn key switch to OFF position to turn off the machine / exit the Config Mode.
27. Turn the key to the ON position and ensure hopper is completely lowered and rolled in. The hopper must be completely lowered and rolled in (in the home position) before it can be reset to the factory roll settings.



28. Press and hold the right arrow key and turn the key switch to the ON position. (Fig. 31).

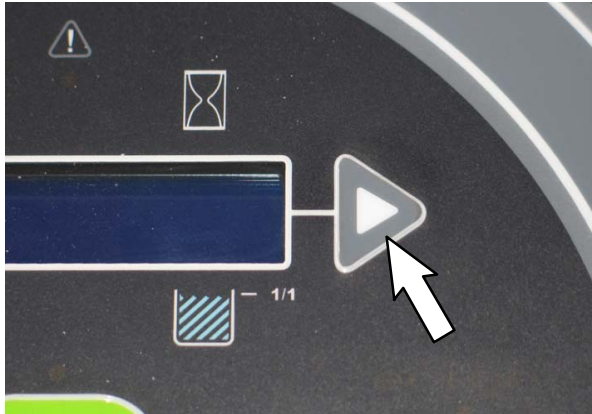


FIG. 31

29. The steering pod assembly (1) should boot to the Service Modes menu. Press the right arrow button / left arrow button to scroll to the MANUAL MODE menu from the Service Modes menu. (Fig. 32)



FIG. 32

30. Press the main scrub brush pressure button to enter the MANUAL MODE. (Fig. 33)



FIG. 33

31. Press the left arrow button to scroll to M35: Fact SetRoll. Press the main scrub brush pressure button to reset the hopper roll out to the factory setting. (Fig. 34)



FIG. 34

32. Verify the value on the left closely matches the value in the parentheses. (Fig. 34)

*NOTE: The hopper factory roll out setting may fluctuate +/- 0.002 when reset. This is normal.*

33. Turn key switch to OFF position to turn off the machine / exit the Manual Mode.

34. Retest machine to ensure all installed options are functioning. Operate the machine with the various scrub / sweep functions to ensure all the controls / buttons function. Raise, roll out, lower, and roll in the hopper to ensure all hopper functions are operational.

---

**Bill Of Materials For Panel Kit, Pod, Afmkt [M17,Standard LCD] - 9015041**

<b>Ref.</b>	<b>Tennant Part No.</b>	<b>Description</b>	<b>Qty.</b>
1	1219319	Panel Assy [M17, UL, Standard LCD]	1

---

TENNANT COMPANY  
P. O. Box 1452  
Minneapolis, MN 55440-1452